

## Specification

### Syringe Type

1cc ~ 5cc Syringe

### Operation Mode

Solution – 0.01 ~ 5cc (0.01cc ↑ ↓)

Gas – 0.1 ~ 10cc (0.1cc ↑ ↓)

Auto – 2 ~ 100 shots, 0.5 ~ 10sec Interval

### Voltage & Frequency

AC INPUT – 220 ~ 240V, 50/60Hz

OUTPUT – DC24V 2.7A, DC5V 6.8A

### Panel

LCD 10.2 inch Touch Screen

### Size

Handpiece – W 248.76mm \* H 32.69mm \* D 55.70mm

Body – W 289mm \* H 472.23mm \* L 907.23mm

### Weight

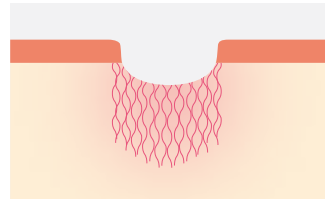
24kg

# Trifill

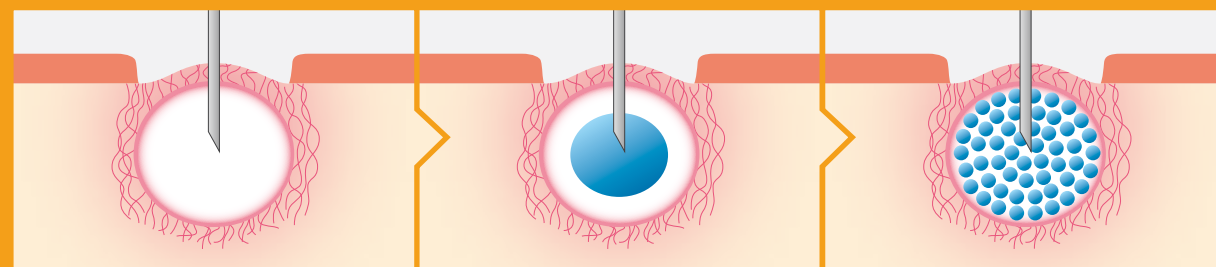
Sequential CO2 Gas Subcision & Solution Injection



## Three-fill Derma Regeneration Treatment



Wrinkle & Scar  
by adhered skin tissue



### 1st Fill : CO<sub>2</sub> Gas

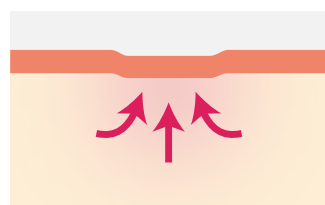
Subcision using  
CO<sub>2</sub> gas for adhered  
skin tissue

### 2nd Fill : Solution

Injection of collagen  
regeneration solution  
into the subcision space

### 3rd Fill : CO<sub>2</sub> Gas

The solution spread  
evenly in the  
subcision space



The subcision space fills up as  
the dermis regenerates

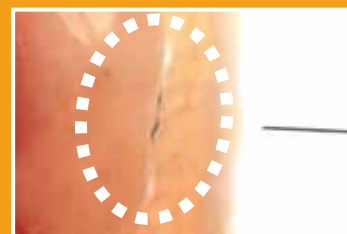
### Actual Treatment Image



Before



CO<sub>2</sub> Subcision



Solution Injection

Easy & Quick



Easy-Guide



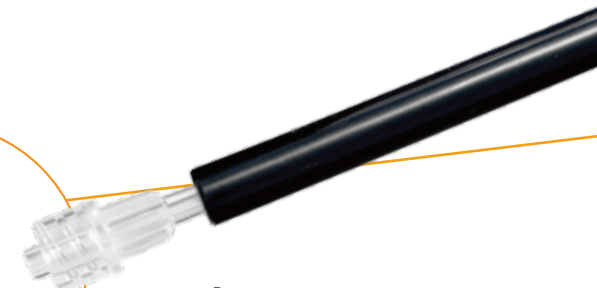
Auto Mode

Professional



Handpiece

Simple



α-Pen

## ADVANTAGES

### Accurate

Excellent effect than the existing procedure as the solution enters directly & accurately into the dissected space.

### No Side Effect

No side effects due to the procedure that fills the dissected space with the regeneration of the dermis rather than filling foreign substances such as fillers.

### Semi-Permanent

A fundamental procedure that induces regeneration of the dermis to fill up wrinkles and scars giving semi-permanent results.

### Markless

Treatment marks are almost markless after the procedure, which allows normal daily routines.

## CLINICAL RESULT

### Skin tone / Pigmentation



### Nasolabial Fold



### Neck Wrinkle



### Acne Scar / Pigmentation



### Scar

